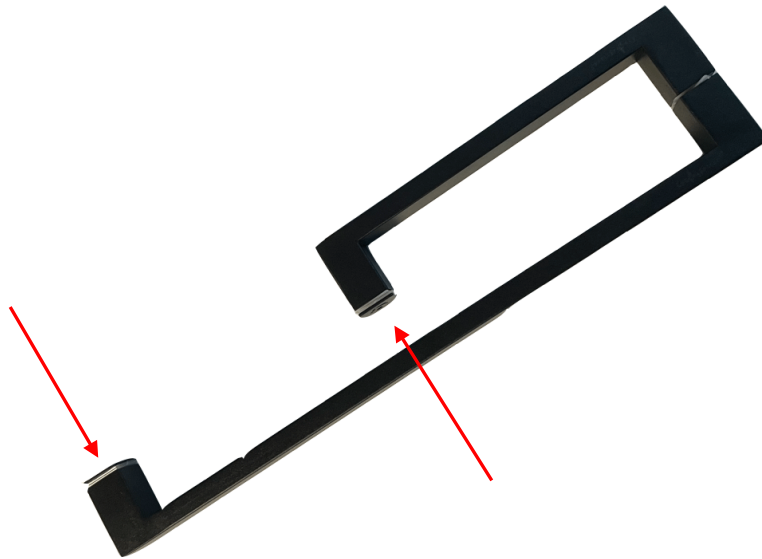


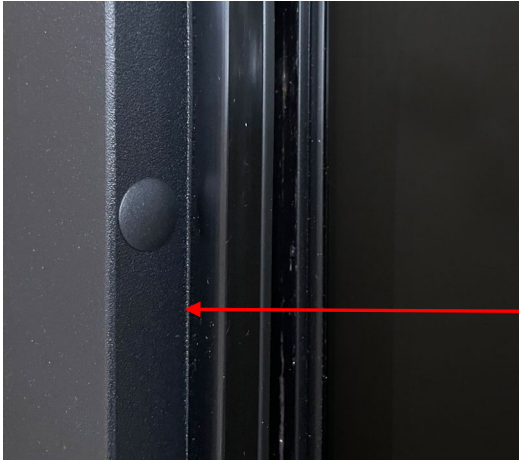
Steam Door Installation Manual

Door Handle Installation

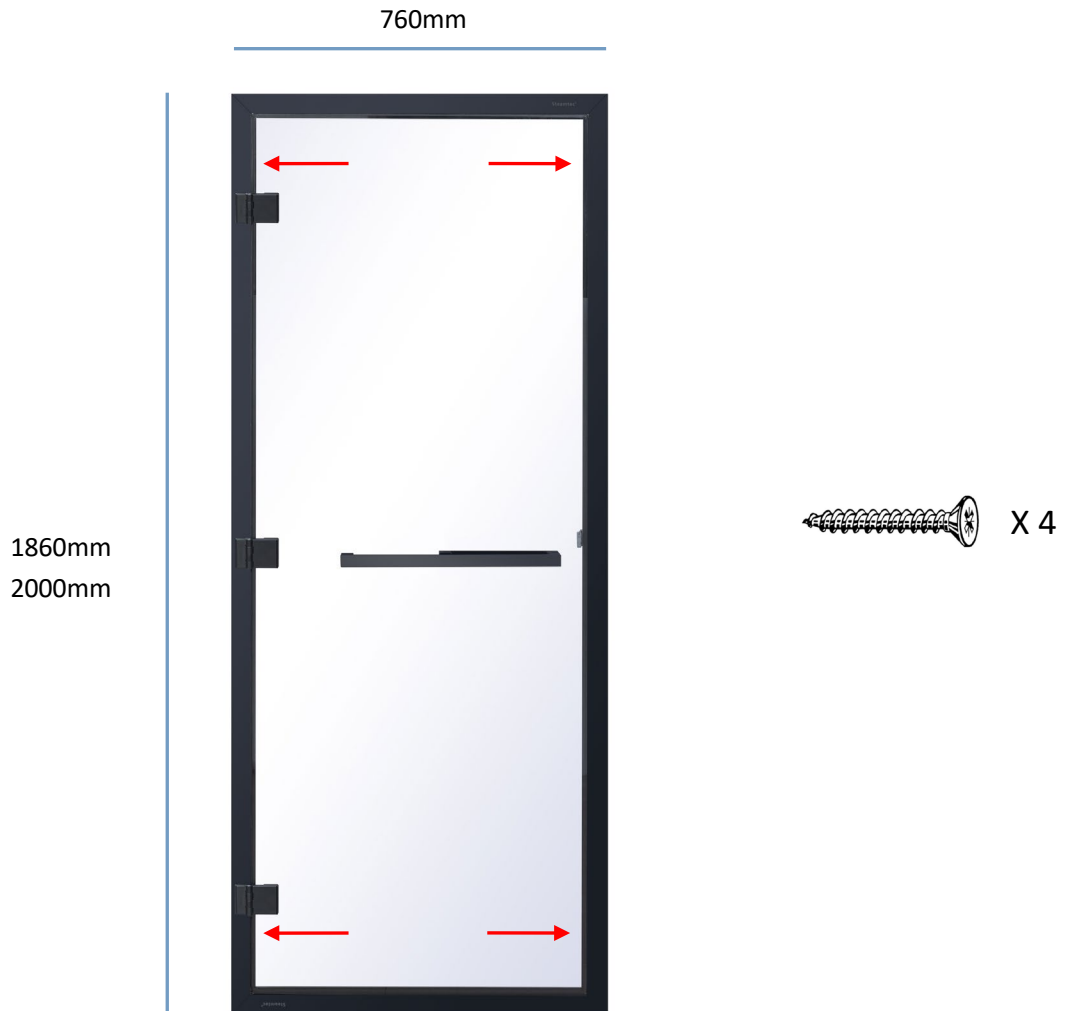
1. Install the door handle first to allow for stability and opening the door. We recommend leaving the door cabled tied at this point whilst you install the handle.
2. Unscrew the door handle and fit according to which orientation you require the door fitting (left or right opening)
3. Fit the large handle with the plastic washers fitting each side of the door and secure with an Allen key as indicated below by the arrows. Spin the smaller handle on to opposite side and secure the other end using an Allen key.
4. Remove the cable tie fitting.



Door Installation



Locate the 4 plastic caps (2 each side of the door) on the inside of the door opening and carefully remove these using a flat head screwdriver. Careful not to scratch the paint finish.



Secure the door to your frame using the appropriate fixings for the wall material (fittings not supplied)

Once the door is securely fitted, replace the caps and the door is now fitted.