



# INSTALLATION MANUAL

## KY3000

### Sauna Series



**30 Day Technical Support:**

Call **01908 317512** and request technical support for aiding your installation.

**Replacements Parts:** Inside of your warranty period visit:

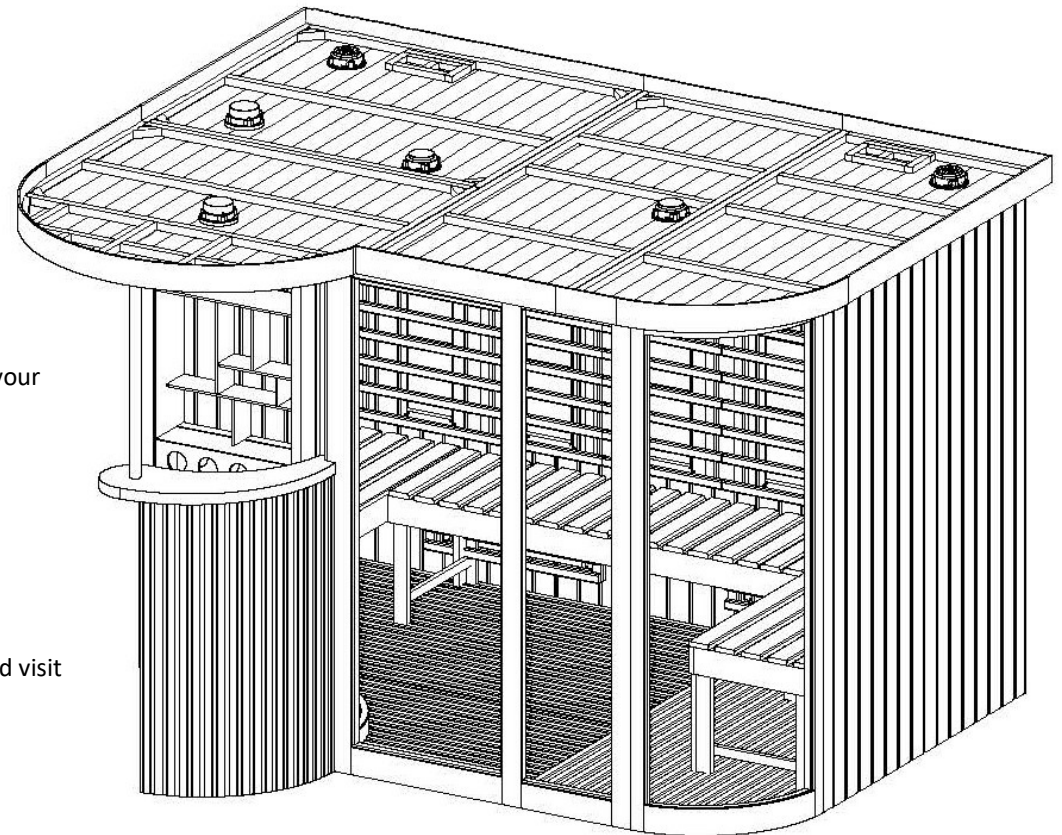
<https://www.insigniashowers.com>, click support and make a warranty claim.

**Spares/Replacements Parts:** Outside of your warranty period visit

<https://www.insigniashowers.com/replacement-parts.html>

**ATTENTION INSTALLERS:**

These instructions must be  
left with the customer



**CHECK ALL CONTENTS BEFORE BUILD COMMENCES. NO RETURNS CAN BE MADE  
ONCE THE BUILD HAS STARTED AS IT IS DEEMED ACCEPTANCE OF PRODUCT!**

## Contents

Thank you for your purchase	3
Electrical & Tool requirements	4
Box contents	5
Roof Connection	6
Back Panel Connection	9
Side Panel Install	10
Bar Install	11
Curved Front Fixed Panel Install	12
Door Frame Install	13
Floor positioning	14
Lower Heater Guard Install	15
Upper Heater Guard Install	16
Bench Framework Install	17
Bench Seat Install	18
Bar Front Install	19
Roof Install	21

Electrics Install	22
Roof Topper Install	23
Door Handle Install	24
Control Panel Instructions	25
Sauna Room Safety Guide	26
WEEE Compliance Statement	27



Thank you for your recent purchase of an Insignia Sauna. Please read this booklet with great care to ensure you get the best out of your build and have a Sauna that will last for many years to come! Like everything, in order to obtain a first class product that will serve you well for many years, the effort and correctness put into the assembly will reflect in the quality of your finish.

## Electrical Requirements Sauna KY3000

Voltage Rating 220-240AC

Frequency Rating 50Hz

Power Rating 6097 Watts

Amperage 25.4 amps

Always consult a qualified Electrician before connection as to suitability Your electrical contractor will understand ALL legal requirements of connection before undertaking any work or installation.

**UNDER NO CIRCUMSTANCES UNDERTAKE THIS YOURSELF. ALWAYS USE AN ELECTRICAL CONTRACTOR AND ENSURE LEGAL CERTIFICATION IS GIVEN ON COMPLETION**

The KY3000 has provision for 240 volts. Your qualified electrician will advise on the method they feel best suits your situation and electrical supply along with any potential benefit either may have.

## Tools Required

### You will require:

- |                |                       |
|----------------|-----------------------|
| • Scissors     | • Philips Screwdriver |
| • Knife        | • Electric Drill      |
| • Spirit Level | • Safety Gloves       |
| • Tape Measure | • Safety Glasses      |

## What's in the Boxes?

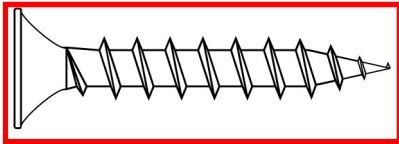
Contents	Quantity	✓
Back Wall (three pieces)	1	[ ]
Floor (three pieces)	1	[ ]
Roof (four pieces)	1	[ ]
Side Panel	2	[ ]
Panel Connectors	2	[ ]
Bar	1	[ ]
Bar front	1	[ ]
Bar Floor	1	[ ]
Door Handle	1	[ ]
Heater Guard	9	[ ]
Screw Pack	1	[ ]

Contents	Quantity	
Bar Support	1	[ ]
Bench Legs	4	[ ]
Bench Frame	3	[ ]
Bench Top	3	[ ]
Curved Front Fixed Glass Panel	2	[ ]
Front Frame/Door	1	[ ]
Roof Topper (four pieces)	1	[ ]

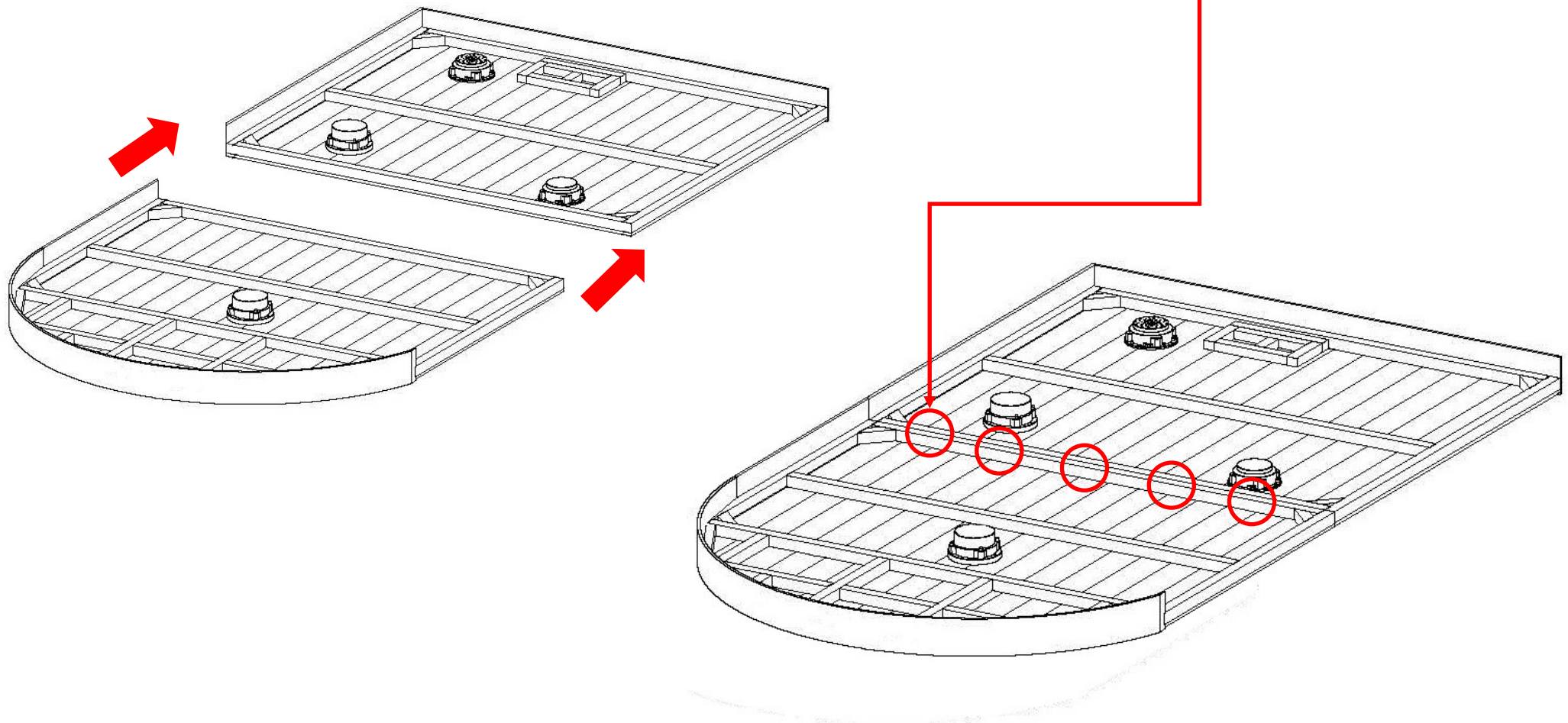
### VERY IMPORTANT

Have you got everything? If not please contact the Insignia directly on **01908 317 512**. Remember **NEVER** book your tradesman until everything has arrived, been checked and is present. No replacement/missing parts can be obtained free of charge during or after the build. Any claims can only be within the timescale permitted (48 hours after delivery) and always **BEFORE** build.

## Step 1 — Connecting the Roof

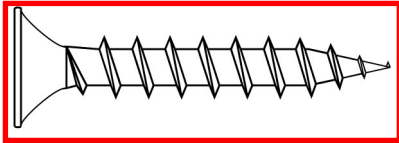


5 x 60mm Screws



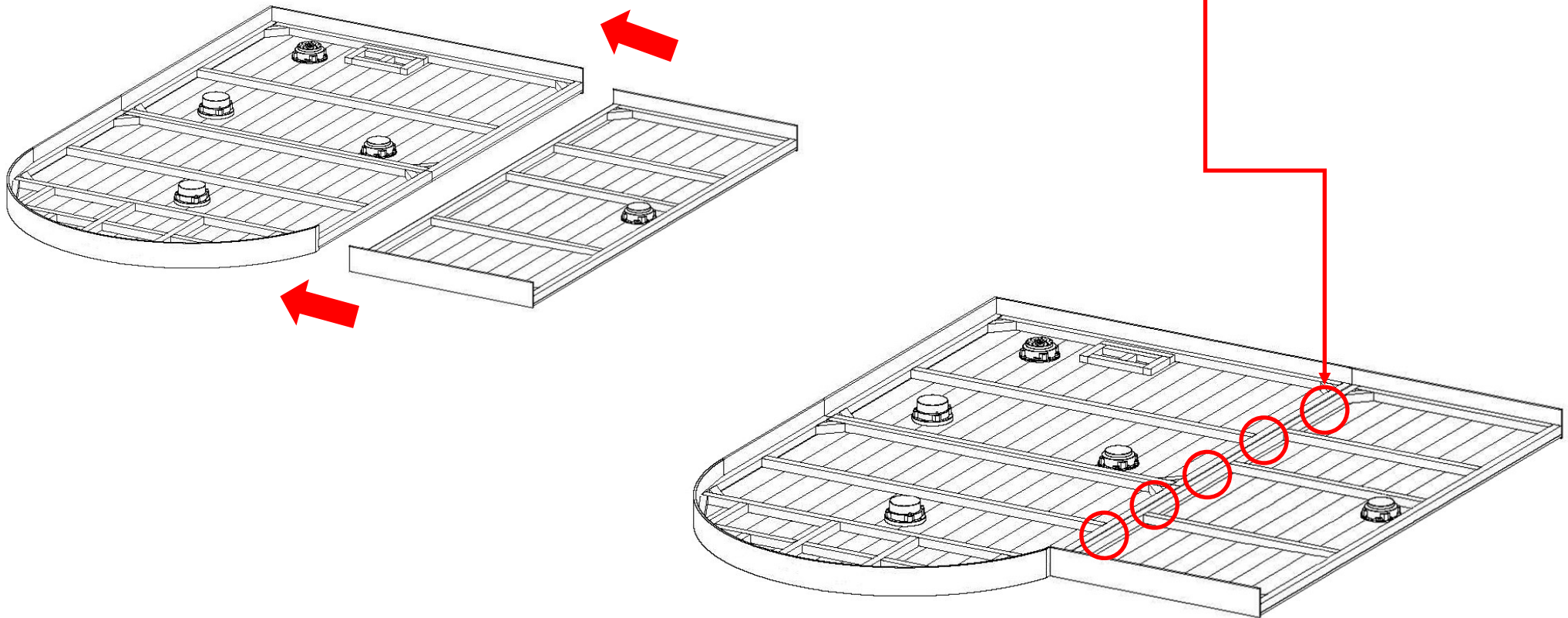
Locate the roof pieces and position together and secure by screwing together using ST60 Screws.

## Step 1 — Connecting the Roof continued



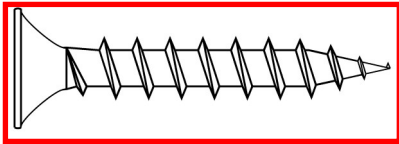
5 x 60mm Screws

Locate the roof pieces and position together and secure by screwing together using ST60 Screws.

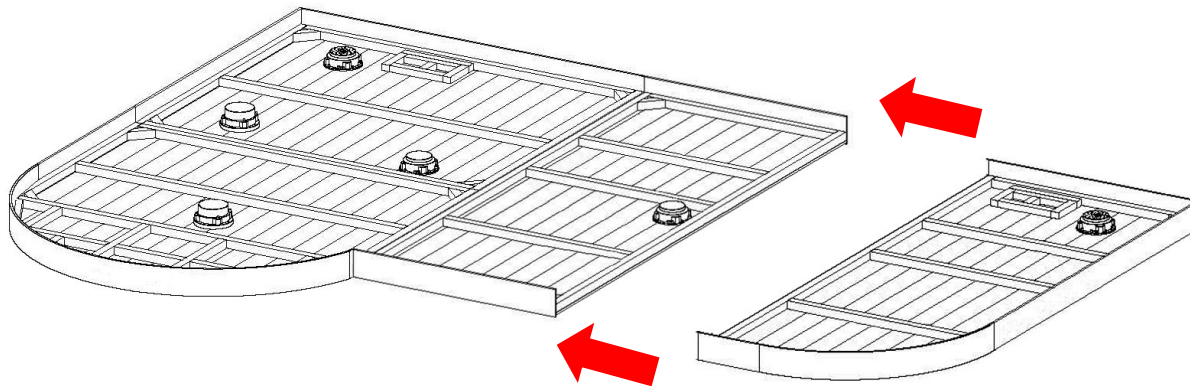




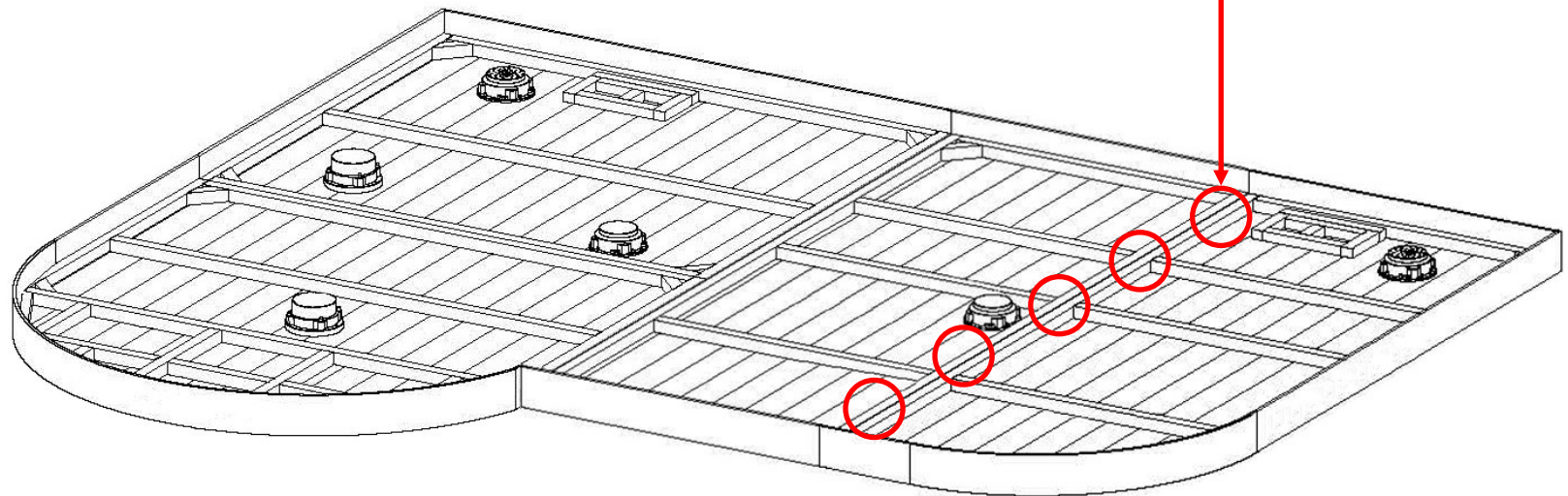
## Step 1 — Connecting the Roof continued



5 x 60mm Screws

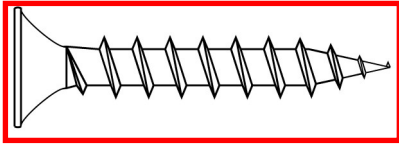


Locate the roof pieces and position together and secure by screwing together using ST60 Screws



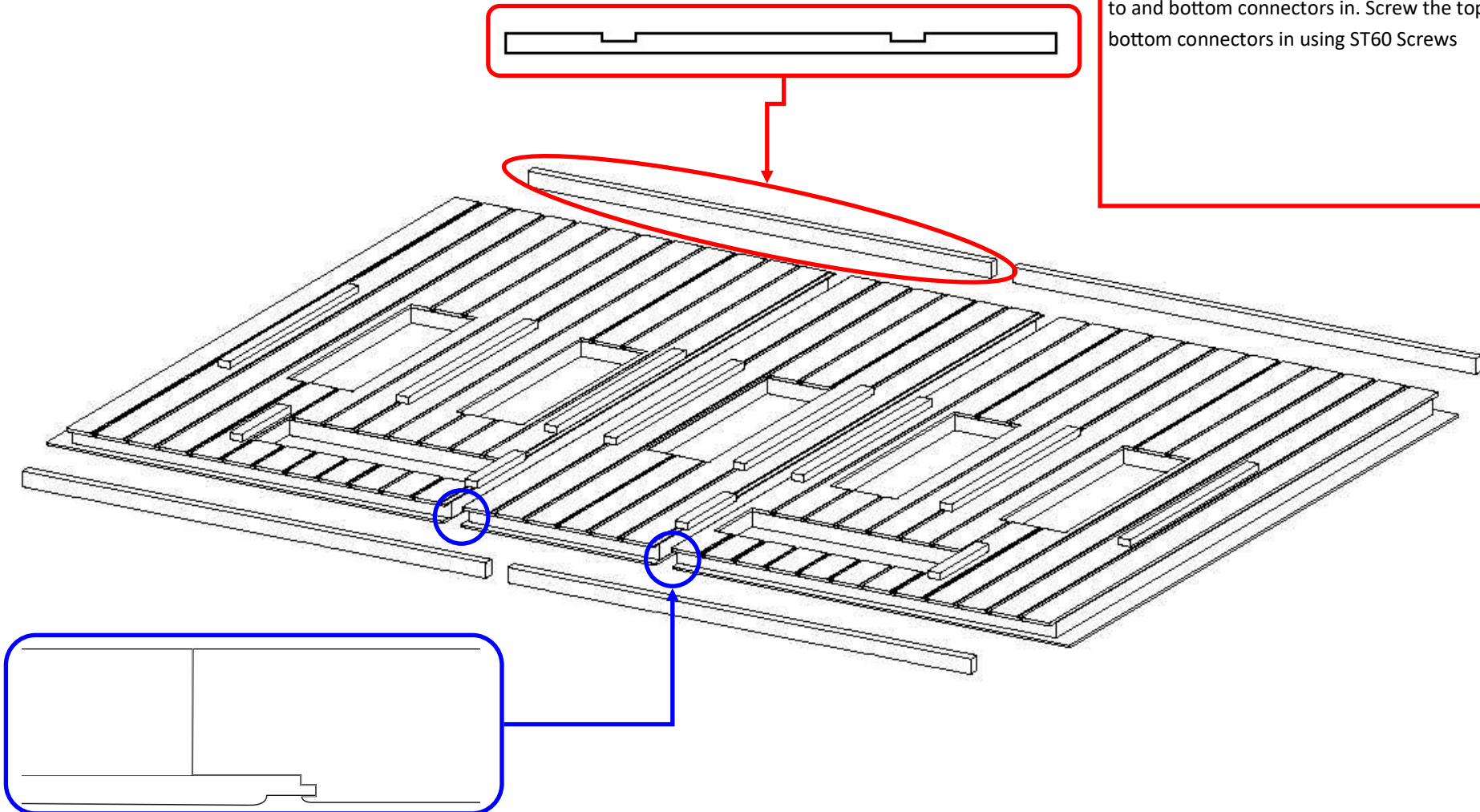


## Step 2 — Left side panel and back panel connection

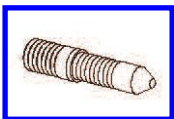


12 x 60mm Screws

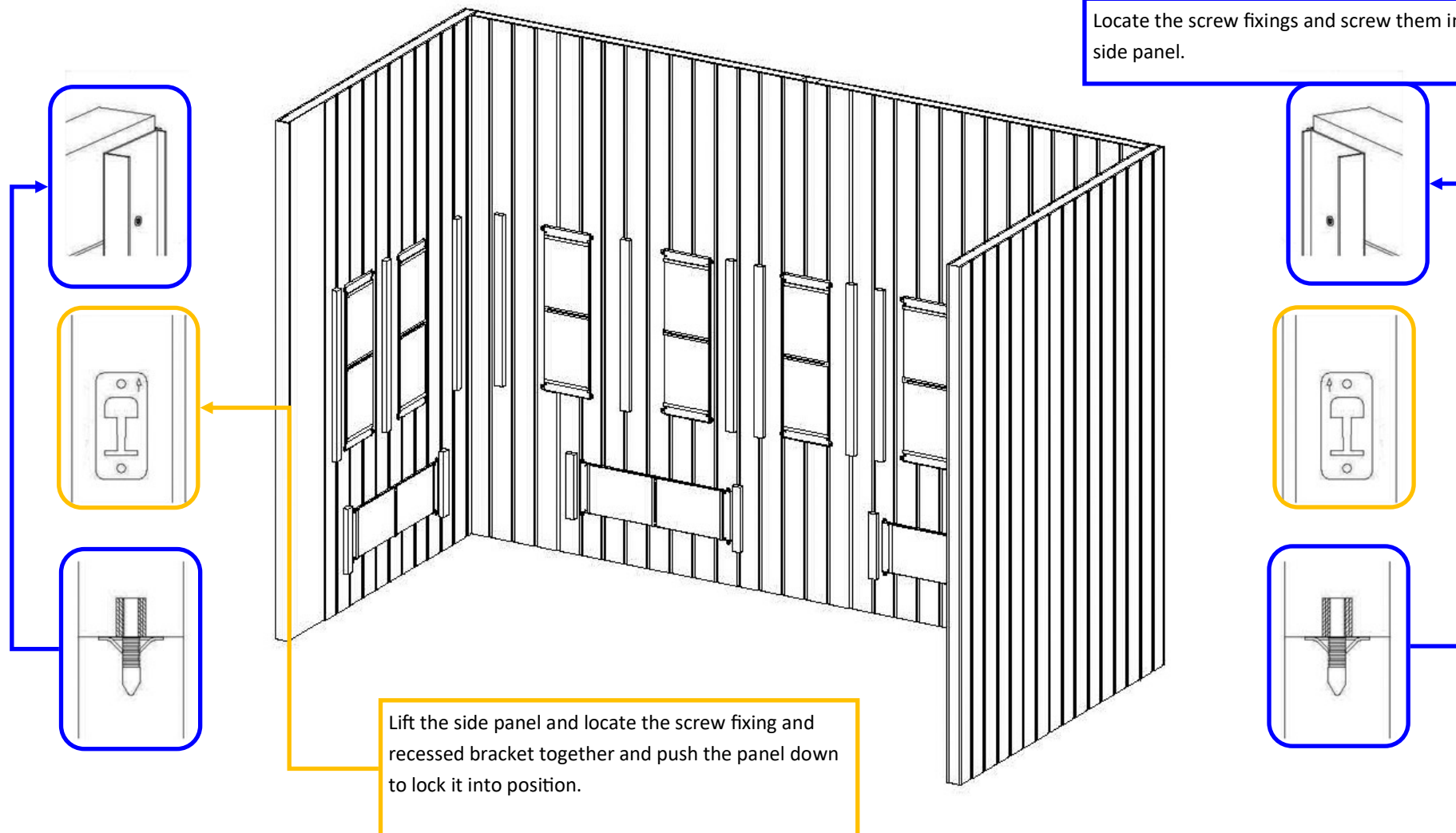
Locate the three back panel pieces, two top bar connectors and two bottom bar connectors. The top bar connectors have grooves cut out for the wires. Slot the back panels together and push the top and bottom connectors in. Screw the top and bottom connectors in using ST60 Screws



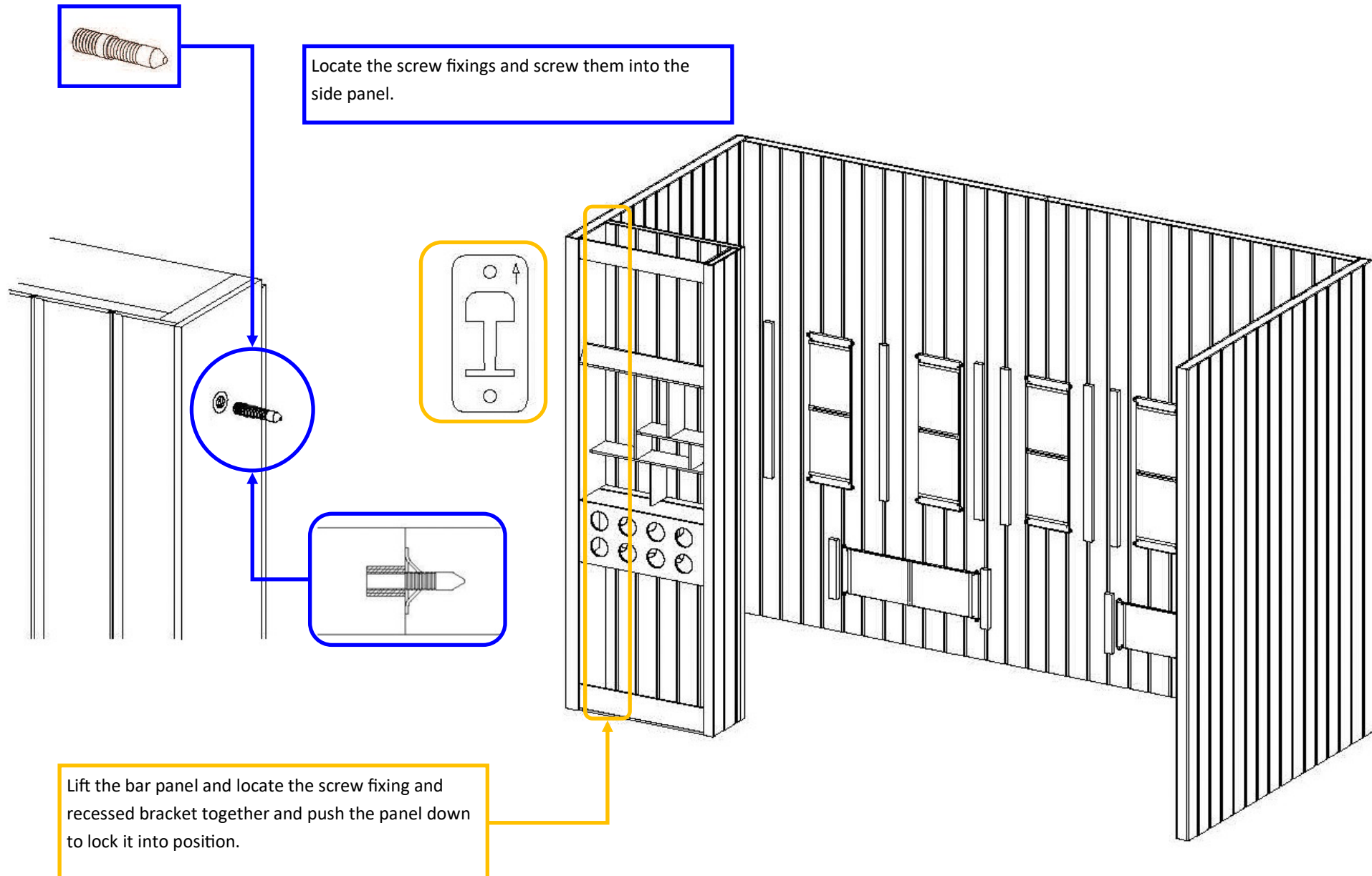
## Step 3 — Back panel to side panel connection



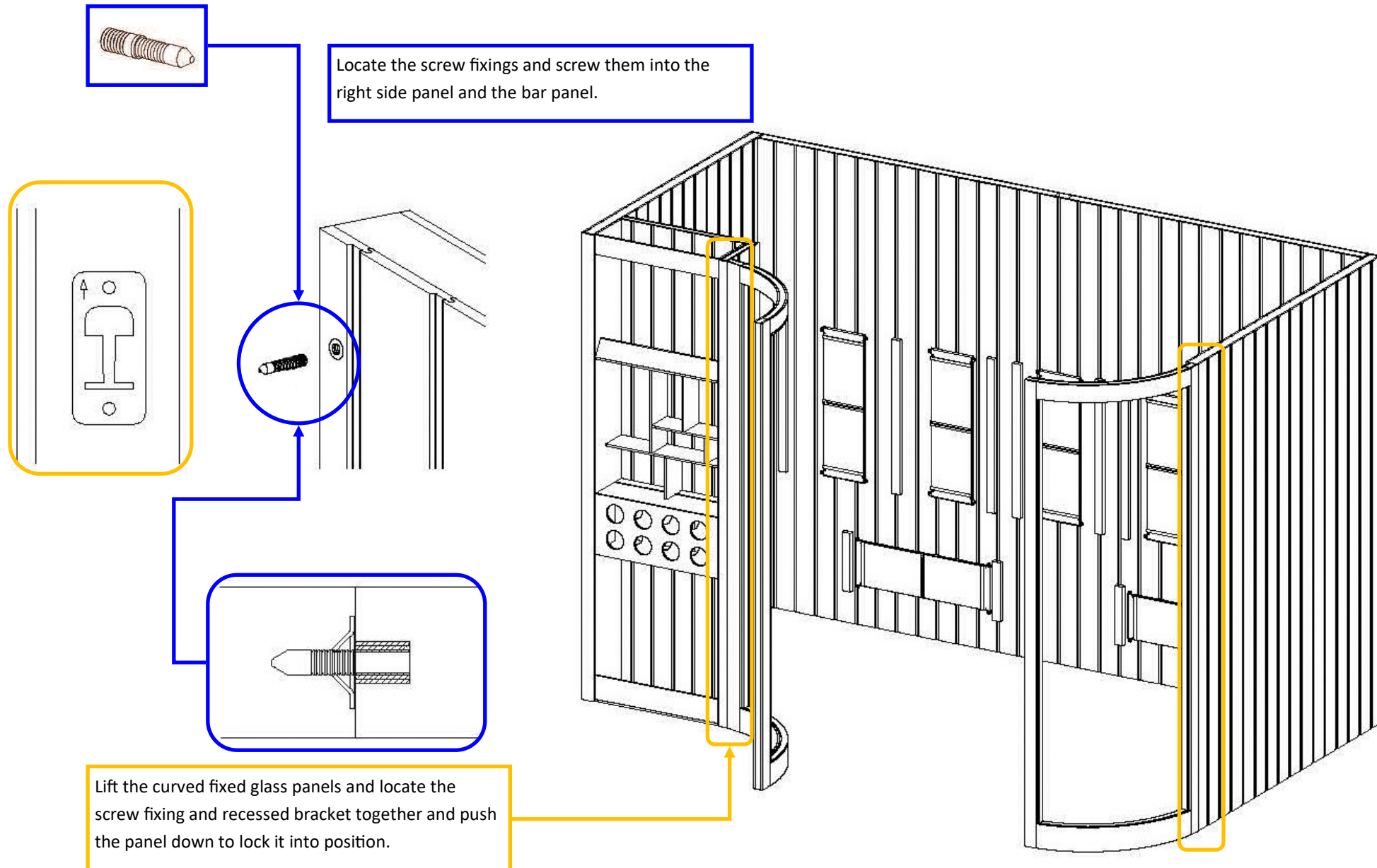
Locate the screw fixings and screw them into the side panel.



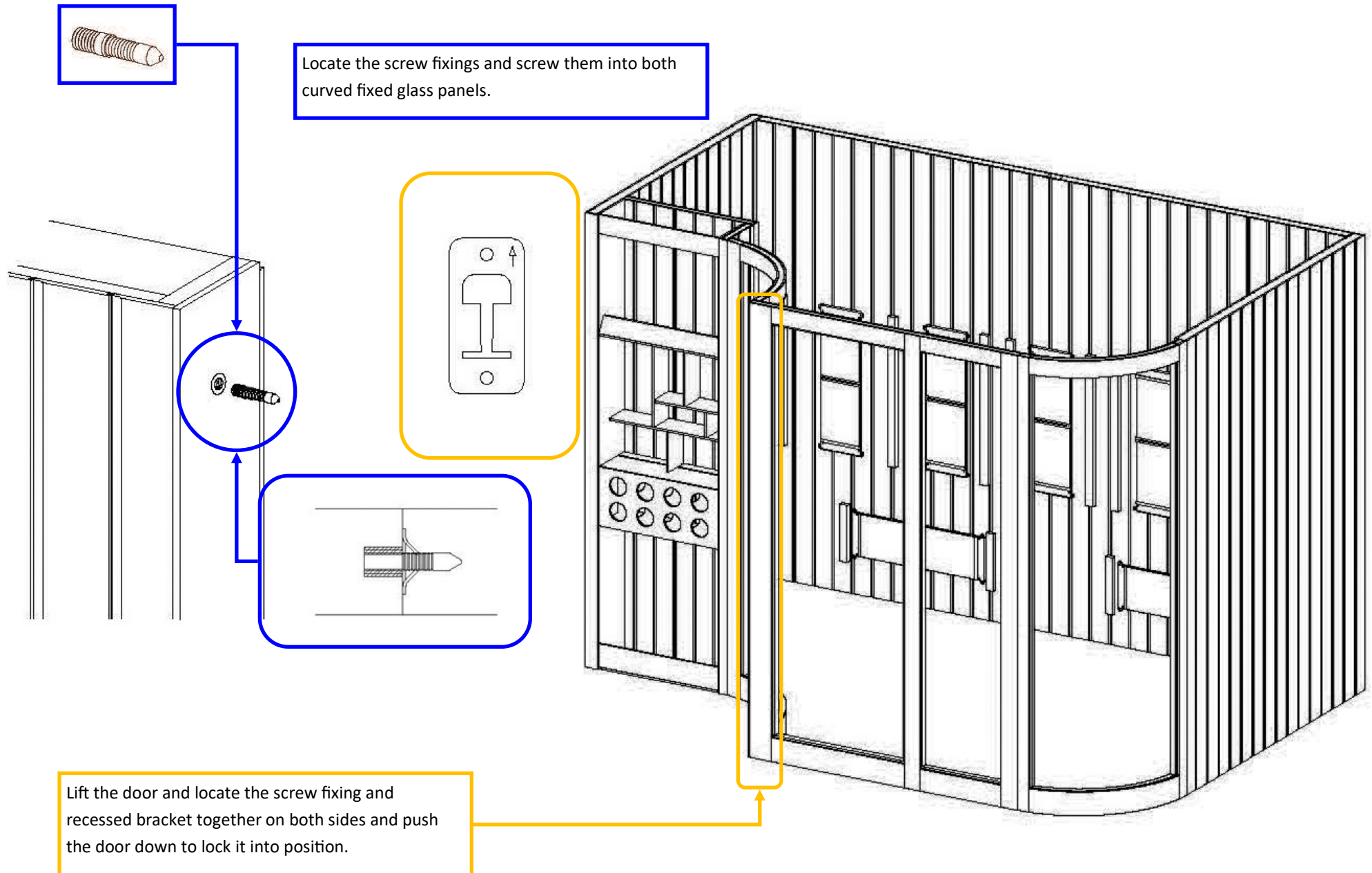
## Step 4 — Bar Panel Install



## Step 5 — Front curved panel install



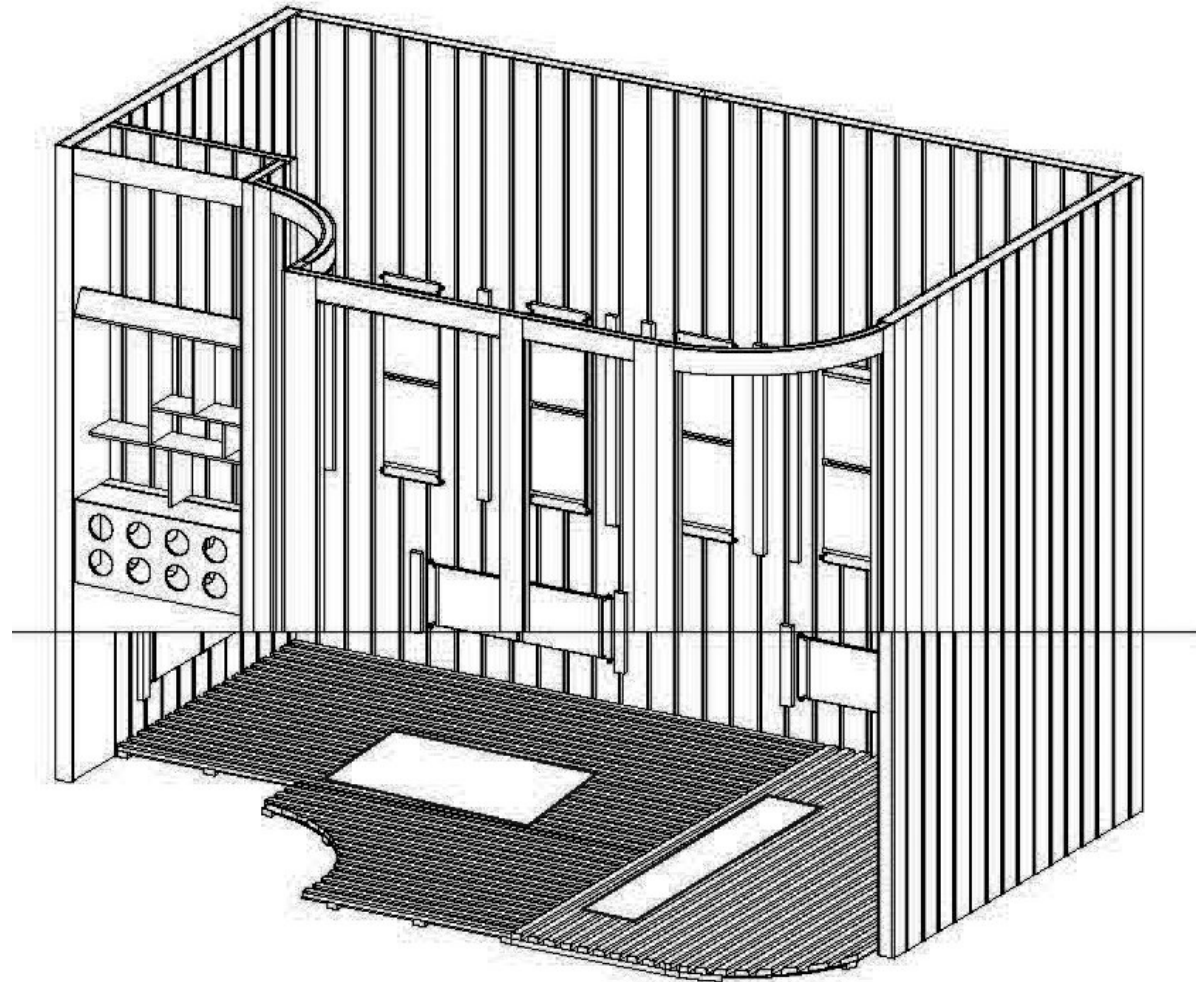
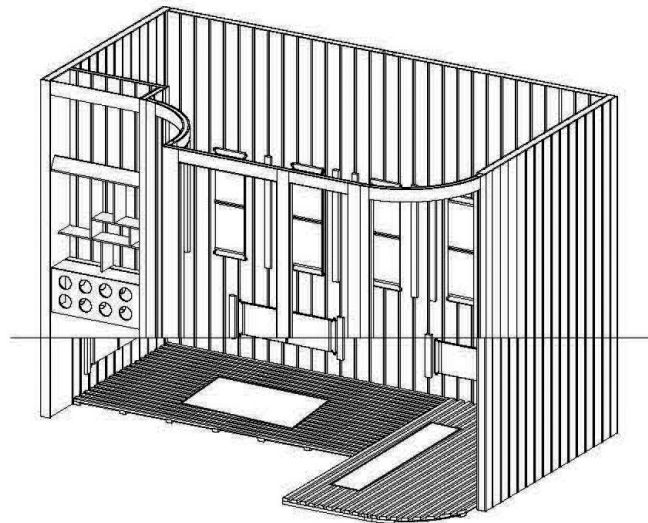
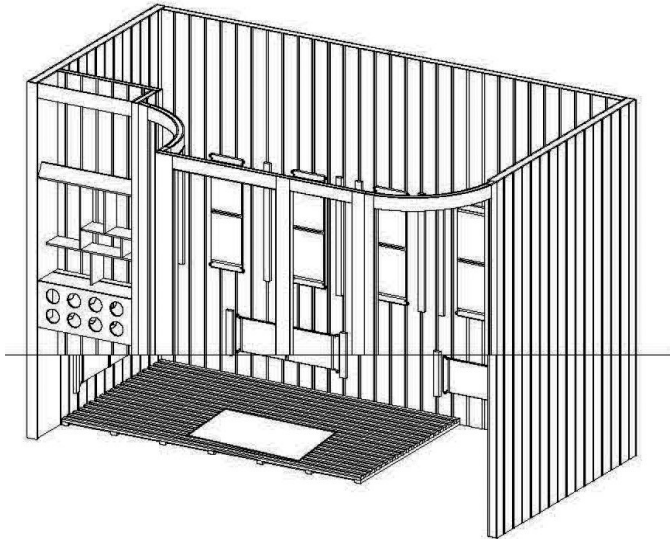
## Step 6 — Door Install





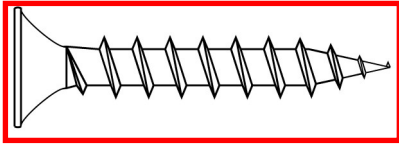
## Step 7 — Floor positioning

Locate the three floor pieces and position into the sauna.

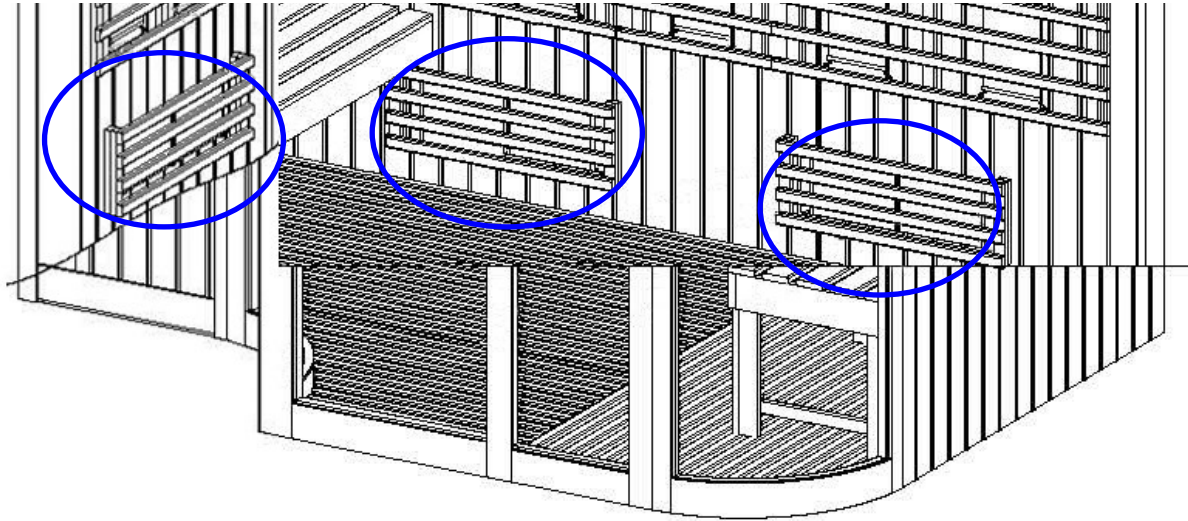




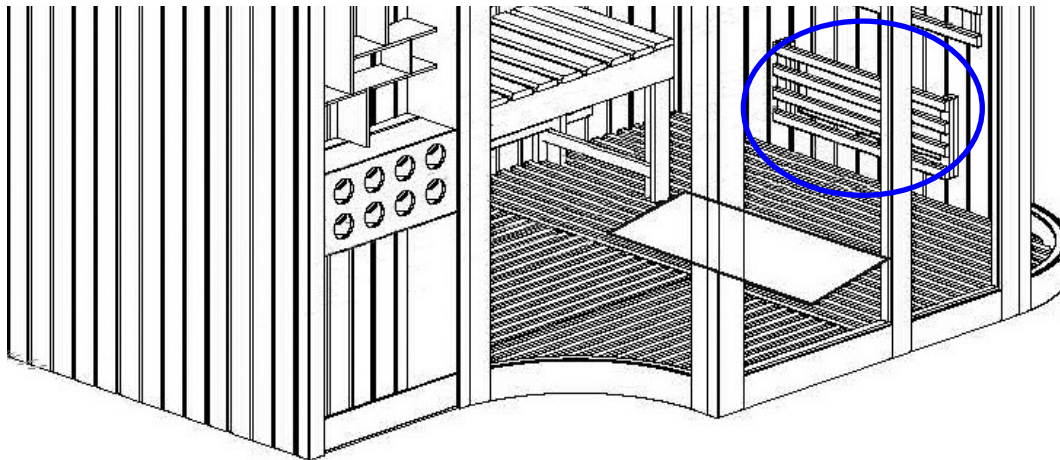
## Step 7 — Lower heater guard install



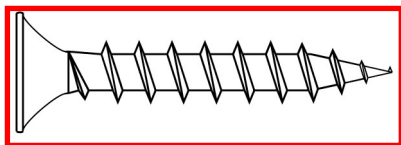
16 x 35mm Screws



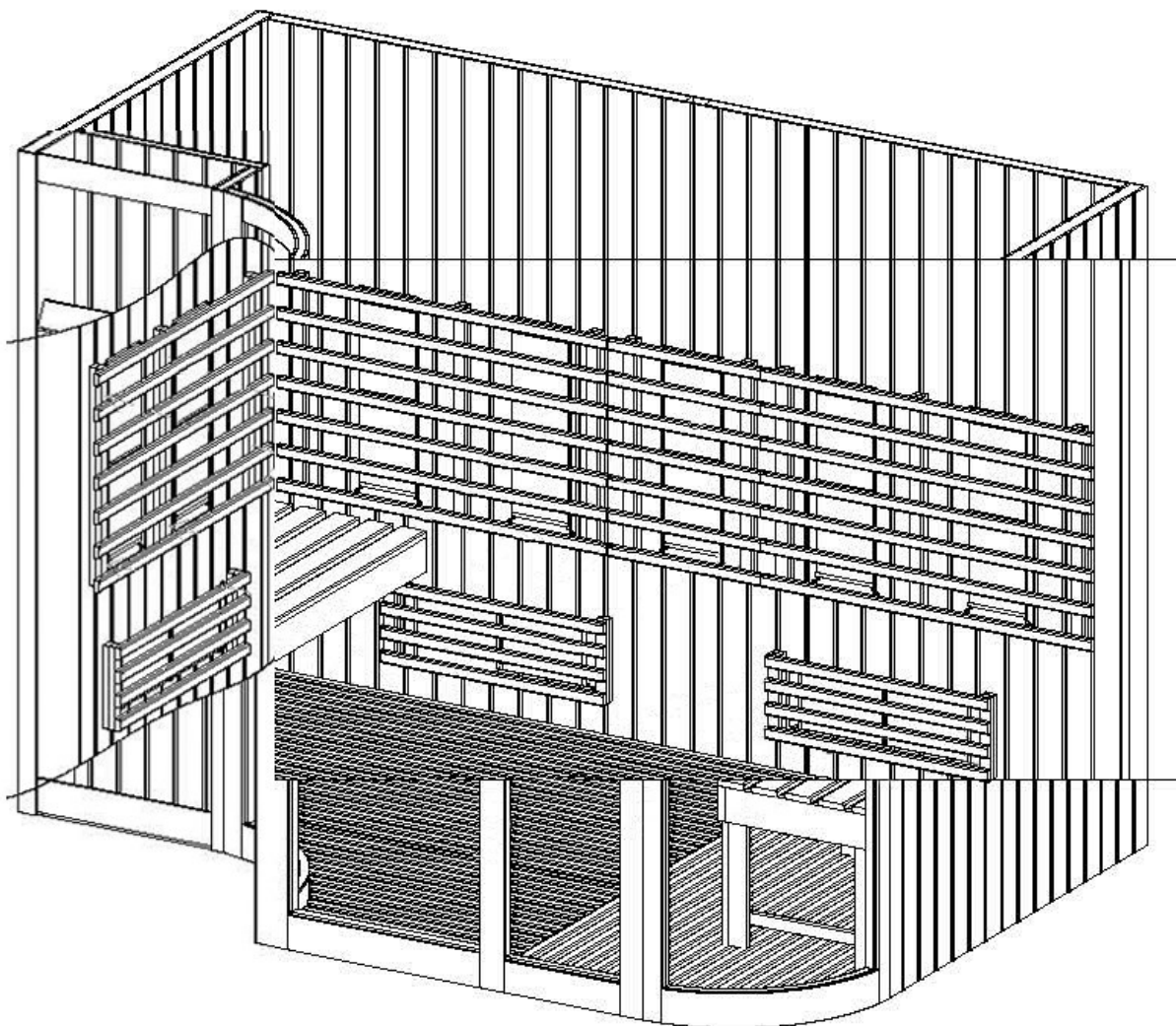
Locate the four lower heater covers and screw them in position using ST35 Screws.



## Step 8 — Upper heater guard install



20 x 35mm Screws

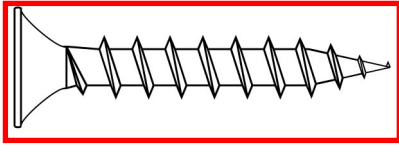


Locate the five upper heater covers and screw them in position using ST35 Screws.

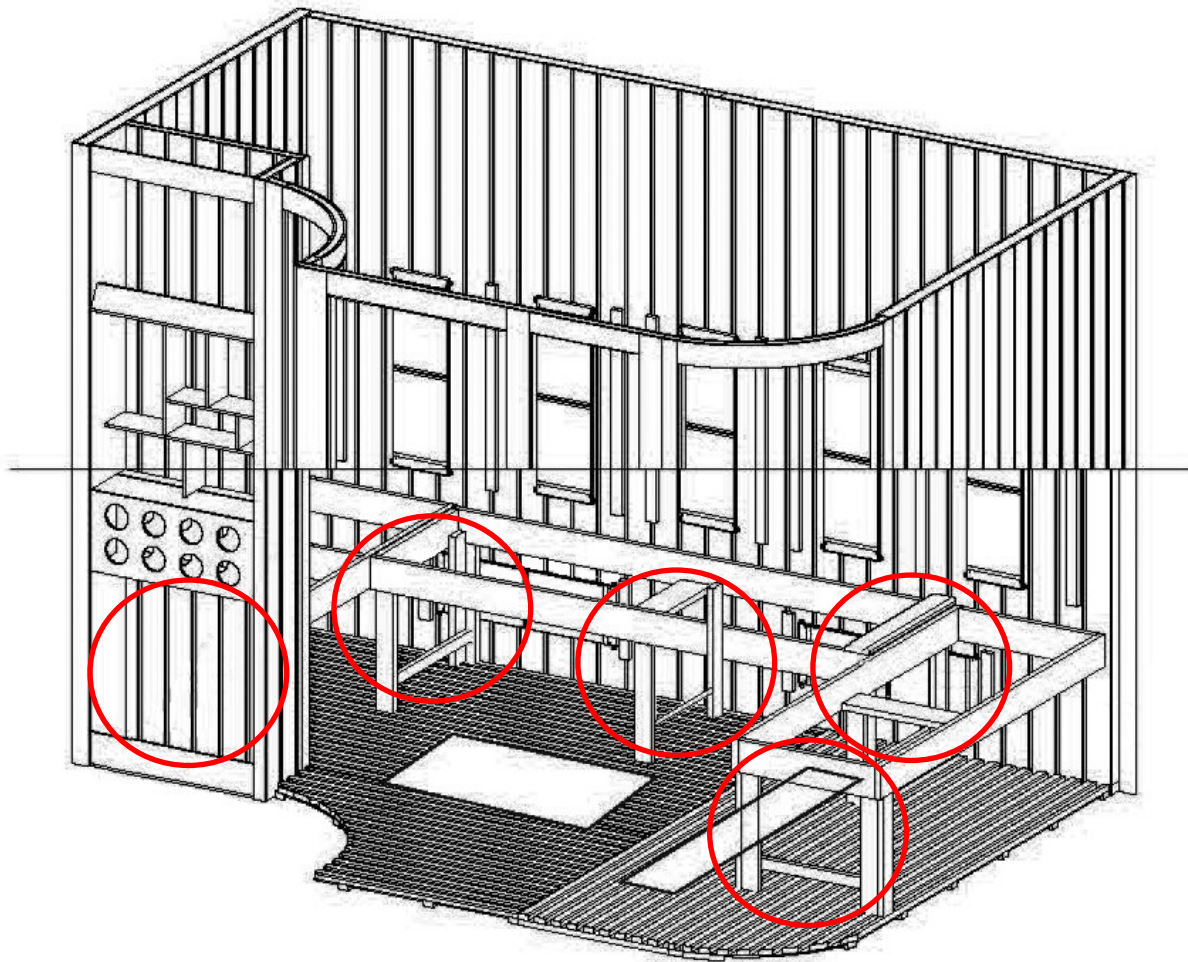
**Note:** The heater panels are different sizes:

- Left side panel = 940mm
- Back panel (left guard) = 1040mm
- Back panel (middle guard) = 460mm
- Back panel (right guard) = 1040mm
- Right side panel = 1220mm

## Step 9 — Bench framework install



20 x 35mm Screws



Locate the bench legs and support framework and place into position. The unique bench leg sits centrally on the back panel bench framework.

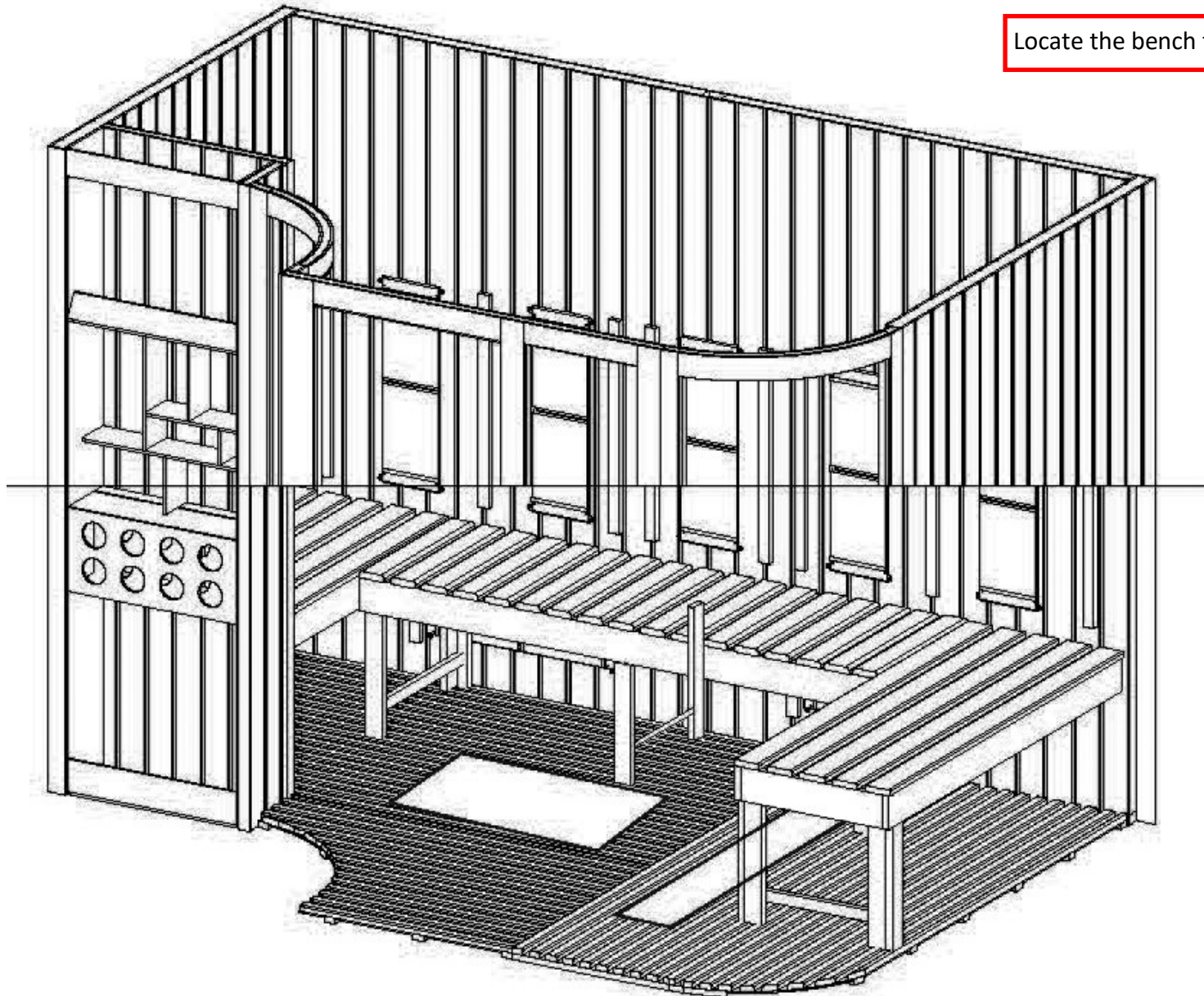
The bench legs have cut-outs for the bench support to fit around. The leg positioning is highlighted.

Secure the bench framework by screwing to the legs and panels all around using ST35 Screws.

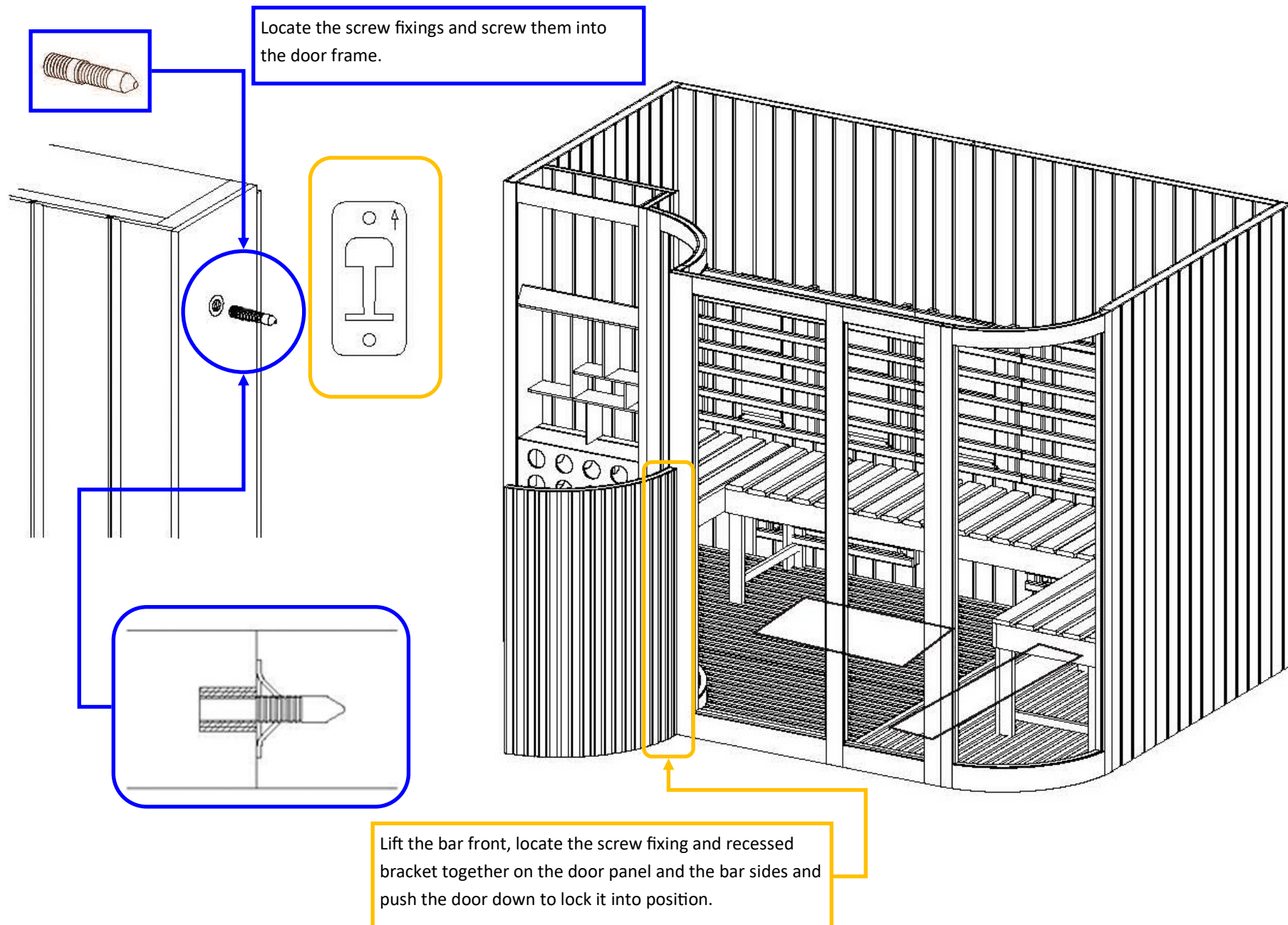


## Step 10 — Bench Top install

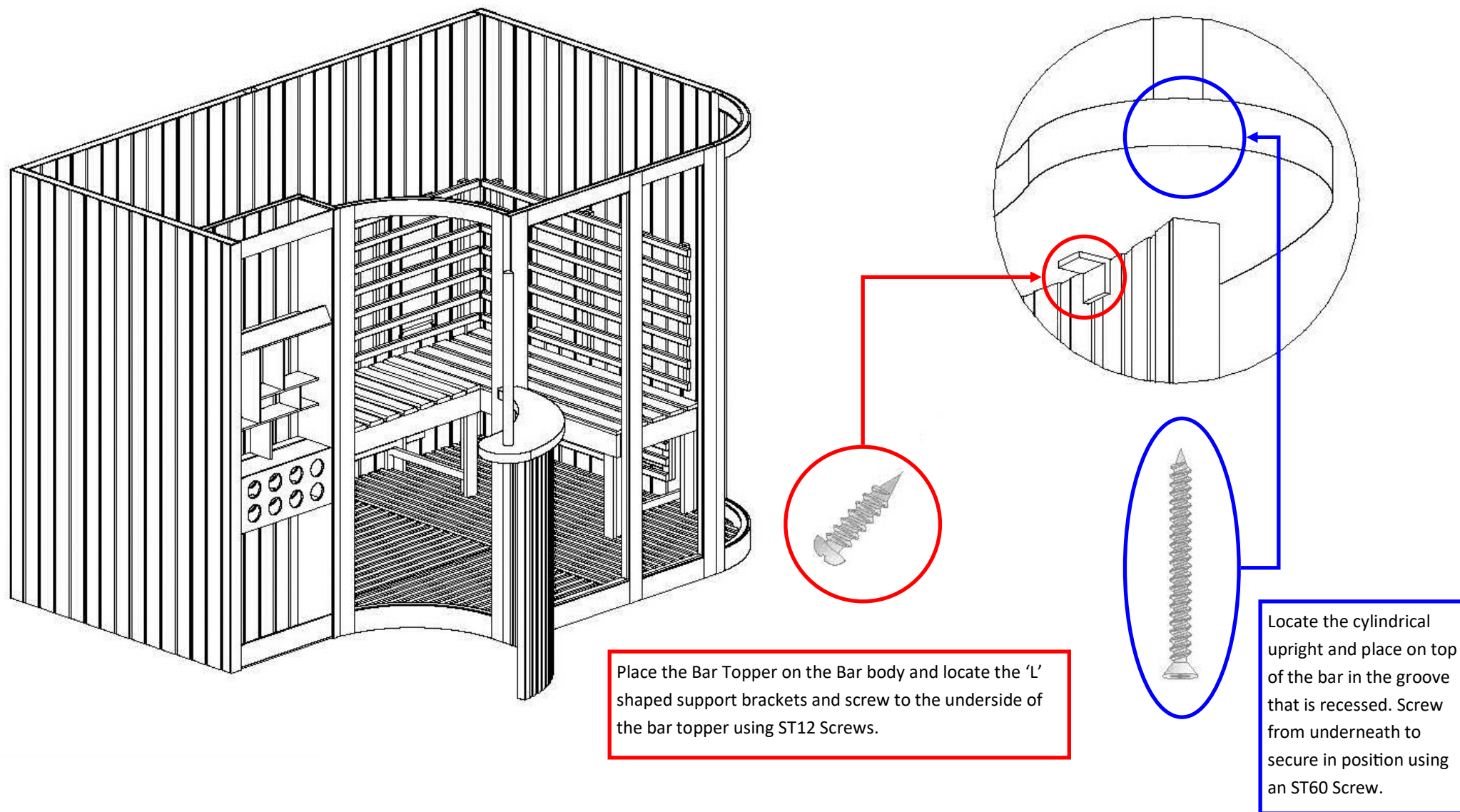
Locate the bench tops and place into position.



## Step 11 — Bar Install

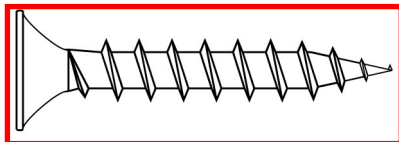


## Step 12 — Bar Topper and Support Install

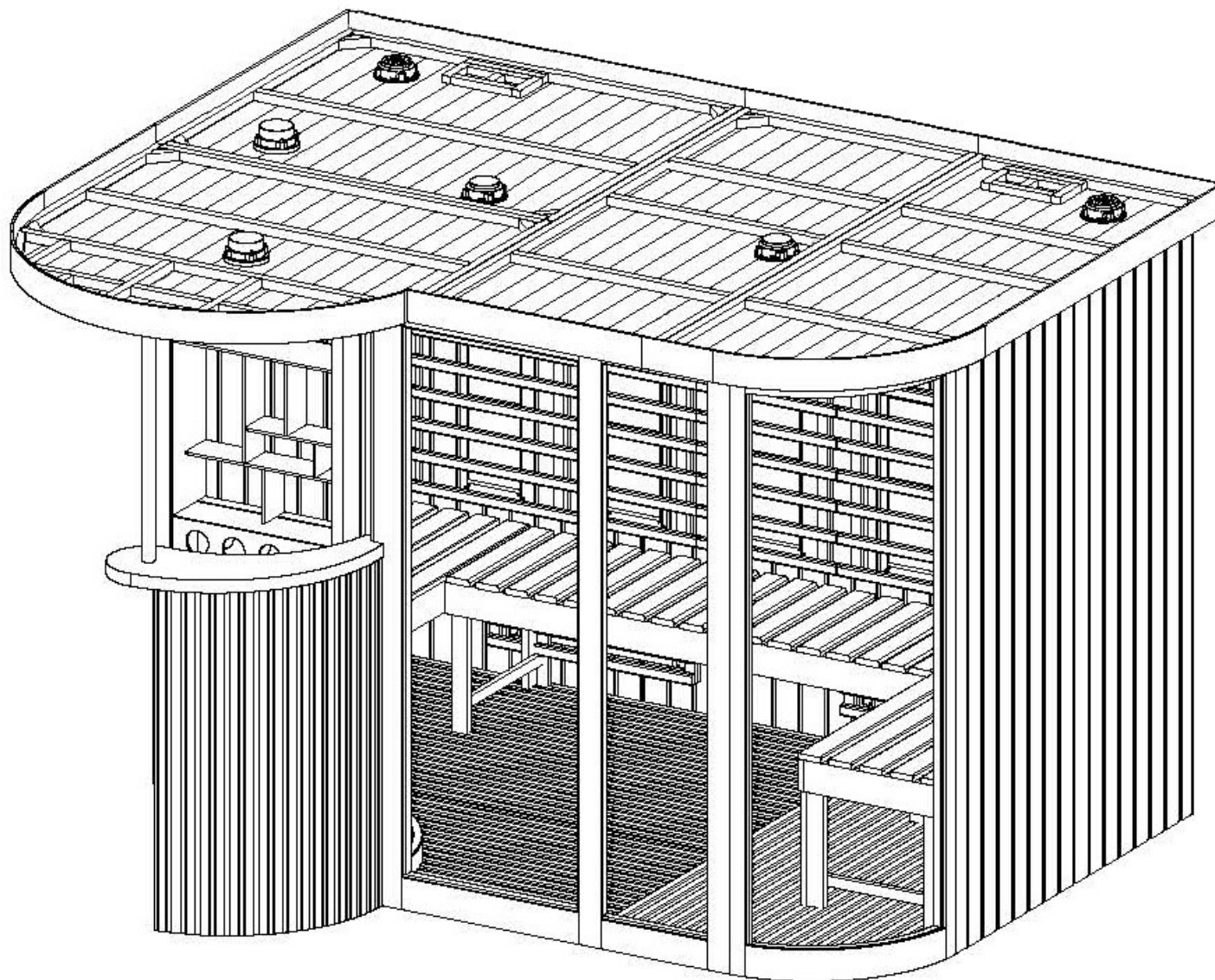




## Step 13 — Install the Roof

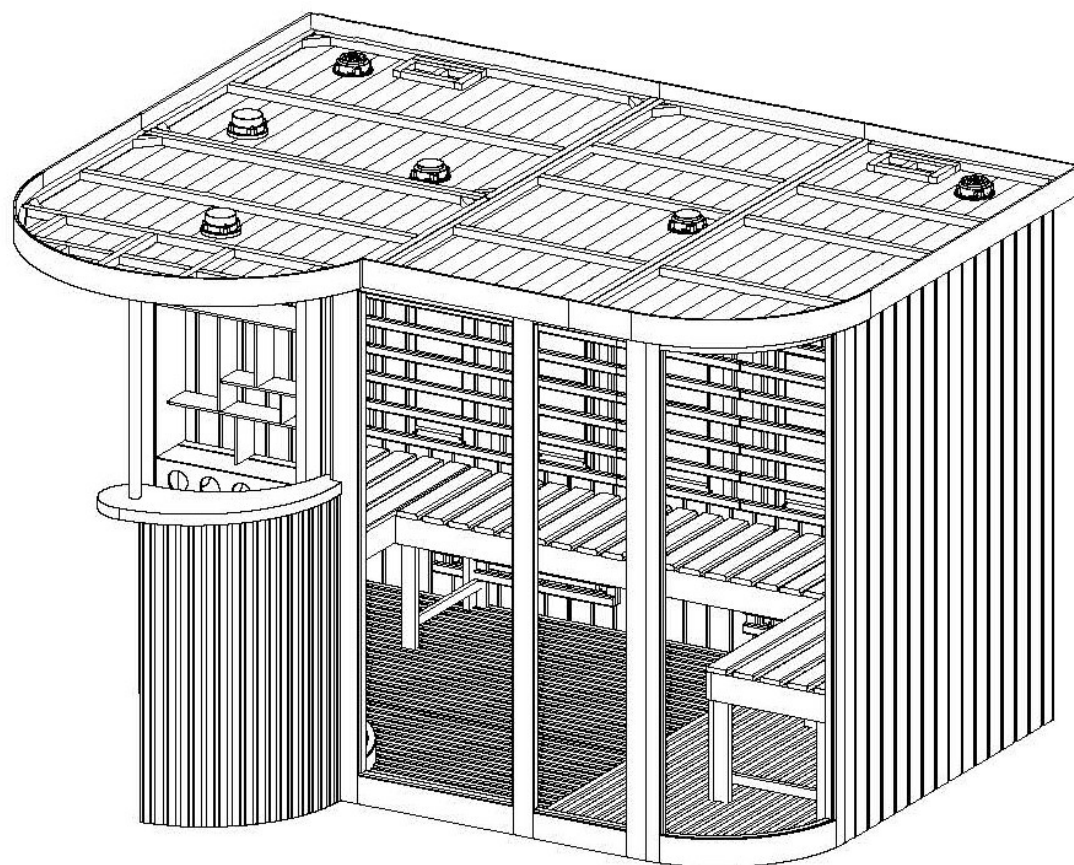
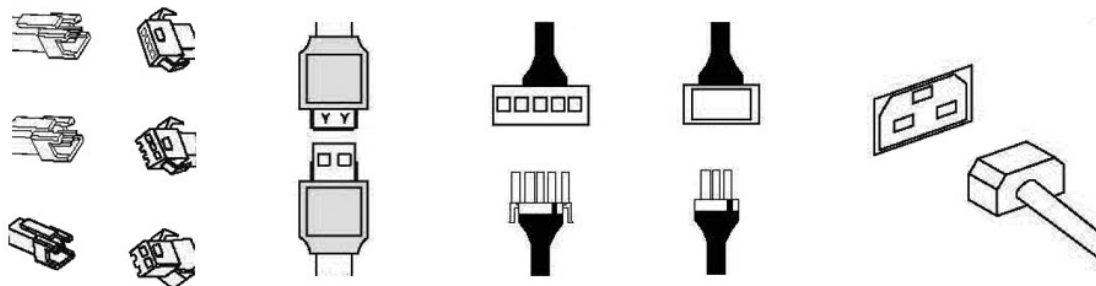


20 x 60mm Screws



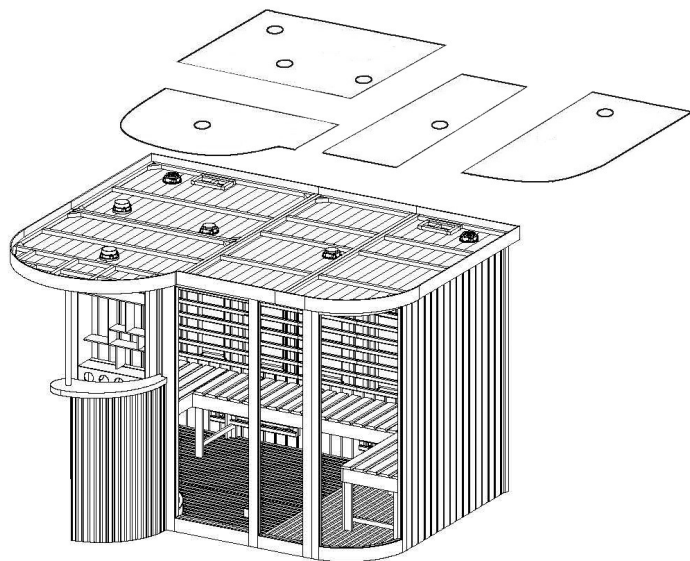
Lift the roof and place on top. Due to the size we recommend a minimum of 3 person lift. The front of the roof is designed to overhang the sauna slightly, so the spotlights sit on the outside of the sauna. Use ST60 Screws to screw the roof down to the back panel and side panels.

## Step 14 — Installing the Electrics

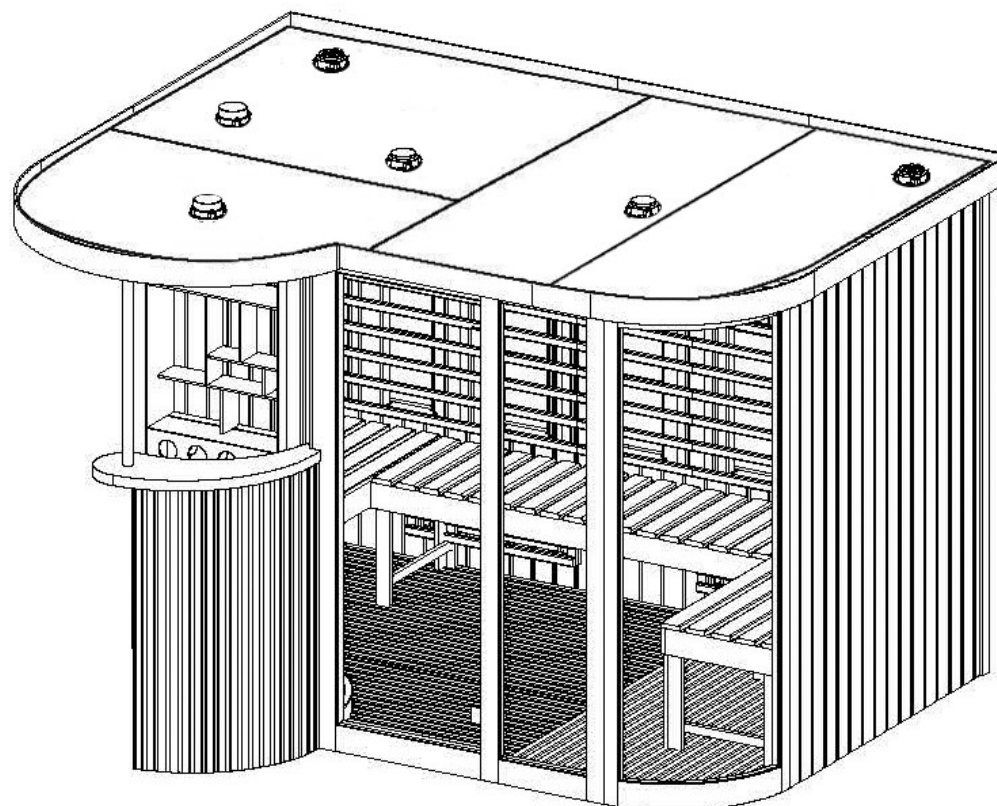
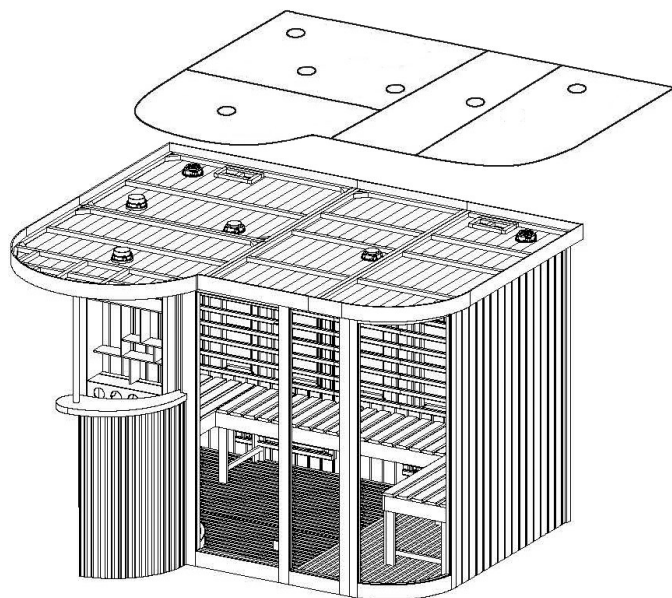


Locate all wires from the roof and connect. Retrieve all wires from the side panels and feed up through the holes in the roof and connect.

## Step 15 — Install the Roof cover



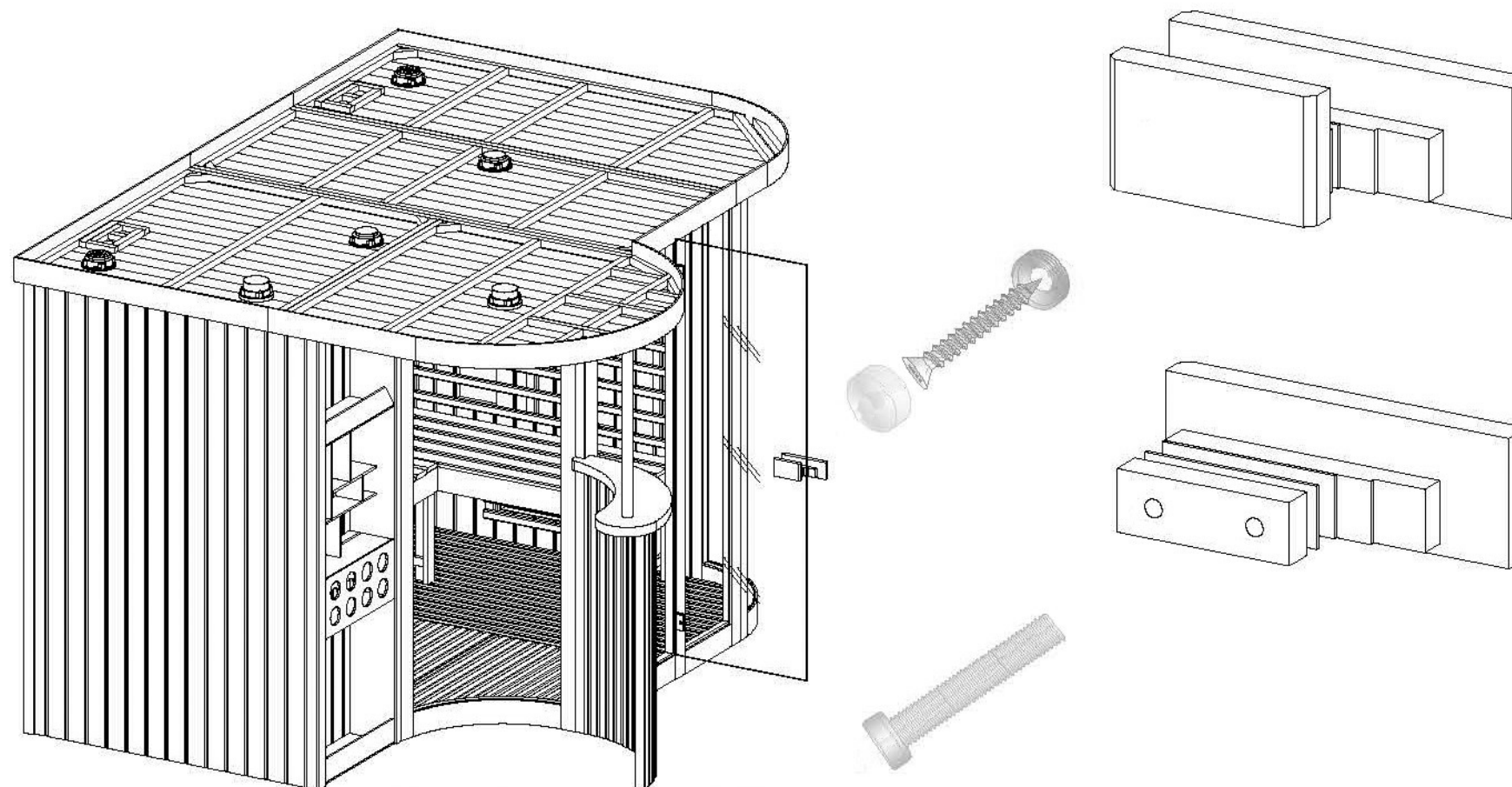
Locate the roof topper sections and place into position. The holes cut out are designed to fit over the top of the speakers and fans located throughout the roof.





## Step 16 — Installing the door handle

Locate the door handle and separate. Place around the door and reconnect, with the larger handle positioned outside the sauna.



KY1500 (KY0721 BT Panel)

# Control Panel Instructions

## Button 1/2 (Sauna Heaters)

Press to activate Sauna heaters. Pressing once will put the heaters on at 100%. Twice = 90%. Three times = 80%. Four times = 70% and five times = Off.

## Button 3(Lights)

Press to cycle through the coloured lights. Each press will change colour until a full cycle is completed and they turn off.

## Button 4 (Fan)

Press to turn the fan on, press again to turn it off.

## Button 5 (Time/Temp)

Press to display temp, then cycle through desired temperature setting (max 60°C) using up and down arrows (Buttons 6/8). Press again to display time, then cycle through desired time setting (max 99 mins) using up and down arrows (Buttons 6/8).

## Button 6/8 (Up and Down Arrows)

Use to cycle up or down through various setting options.

## Button 7 (Play/Pause/Memory)

Use to Play/Pause music through various settings. When searching and tuning the radio, use to save a desired frequency to a specific channel.

## Button 9 (Set)

Press and use the arrows (Button 5/11) to manually search. Hold to tune radio stations automatically.

## Button 10 (Audio Mode)

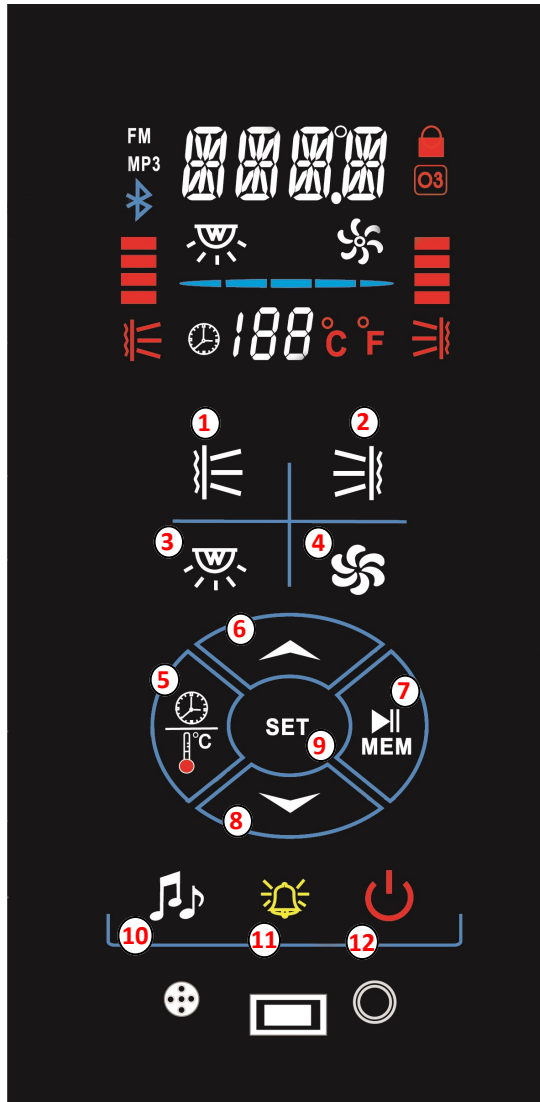
Press to cycle through the audio options, Radio/MP3/USB/Bluetooth or AUX. To connect the Bluetooth press the Audio function (Button 10) until 'BT' is shown on the control panel. Pair the sauna with your device. Once connected a tone will signify the connection has been successful and the Bluetooth icon showing on the panel interface.

## Button 11 (Alarm)

Press to activate the alarm, press again to deactivate it.

## Button 12 (Power)

Use to power the control panel on or off. Also use to unlock the panel (enters lock mode automatically after 60 seconds of inactivity).



## Sauna Usage & Safety Guide

1. Never leave children unattended in the Sauna.
2. Regulate (if preferred) the temperature of sauna before session - Pre-heat time 15-30 minutes (from room temperature 20c)
3. Never touch the heater panels whilst in operation, possible burning may occur.
4. Recommended time of use is a maximum of 15 mins initially. We highly recommend working up in time to this, beginning with 5 minute sessions to get your body used to using a sauna.
5. Suggested operational heat range: Infrared—30° C-40° C. Infrared optimum use range 35°C to 40°C
6. Stay hydrated during each Sauna session.
7. Exit the sauna immediately if feeling dizzy, faint or short of breath.
8. Do NOT use the sauna if you're pregnant, have a heart condition, have low or high blood pressure. If you're unsure consult your GP before use.
9. If you have any underlying health conditions which you feel could be aggravated by an increase in temperature, consult your GP before use.
10. If you begin to have any issues with your health after using a sauna, stop immediately and consult your GP regarding your symptoms before continuing to use.
11. Consult your GP before using the steam room if you're on medication at all, especially with drowsy side effects.
12. Never use this sauna if you have been drinking alcohol or under the influence of other substances.
13. Do not put combustible material on the heaters at any time.
14. Always turn power supply off after use.



## WEEE Compliance Statement

The UK Waste Electrical and Electronic Equipment (WEEE) regulations came into force on 2 January 2007. Under this new legislation, producers of electrical and electronic equipment (EEE) have to fulfil certain obligations.

Under the WEEE directive Insignia is considered the producer of certain products we supply and in line with the demands of the legislation we are pleased to offer the opportunity to return these products to us for treatment and recycling.

Insignia products will generally have an identifying mark and the common crossed out wheelee bin label. We accept returns of all products carrying the Insignia brand. All other products are either considered outside the scope of WEEE or Insignia is not technically the producer of these products. Insignia also accepts historic like-for-like WEEE returns. All WEEE returned to Insignia will be recycled in appropriate treatment and recycling centres in accordance with the legislation. If you wish to return any products to us, please send your item(s) to our head office.

Company Contract No. 326457

WEEE Producer No. CBDU64227



### LABELING

Products labelled with the WEEE symbol (a crossed out “waste bin”) indicate that the final user should not discard this product along with other household waste, but that it must be collected and treated separately.



### Returns Address for WEEE

Insignia

9a Deans Road, Old Wolverton, Canon Industrial Park, Milton Keynes, Buckinghamshire, MK12 5NA, UK



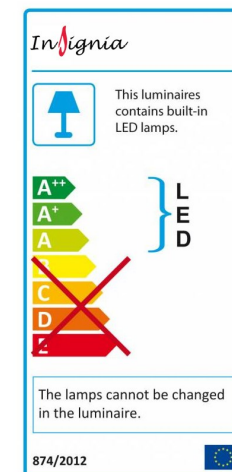
### EU – Declaration of Performance

Insignia declares that all its products complies with the essential requirements and other relevant provisions of Directive 305/2011/EC. A copy of the Declaration of performance is available from [www.insigniashowers.com/ce-certification](http://www.insigniashowers.com/ce-certification)

Insignia™ is a registered trademark of Maclean International Ltd, 9a Deans Road, Old Wolverton, Canon Industrial Park, Milton Keynes, Buckinghamshire, MK12 5NA, UK

All images are subject to copyright. Images may not be used in any way shape or form with out written permission from Maclean International Ltd. Images are NOT permitted to be saved, printed or uploaded. Violation of copyright laws are punishable by law.

All images are registered with  
ImageTraker



Insignia™ is a registered trademark of Maclean International Ltd

All images are subject to copyright. Images may not be used in any way shape or form with out written permission from Maclean International Ltd. Images are NOT permitted to be saved, printed or uploaded. Violation of copyright laws are punishable by law.